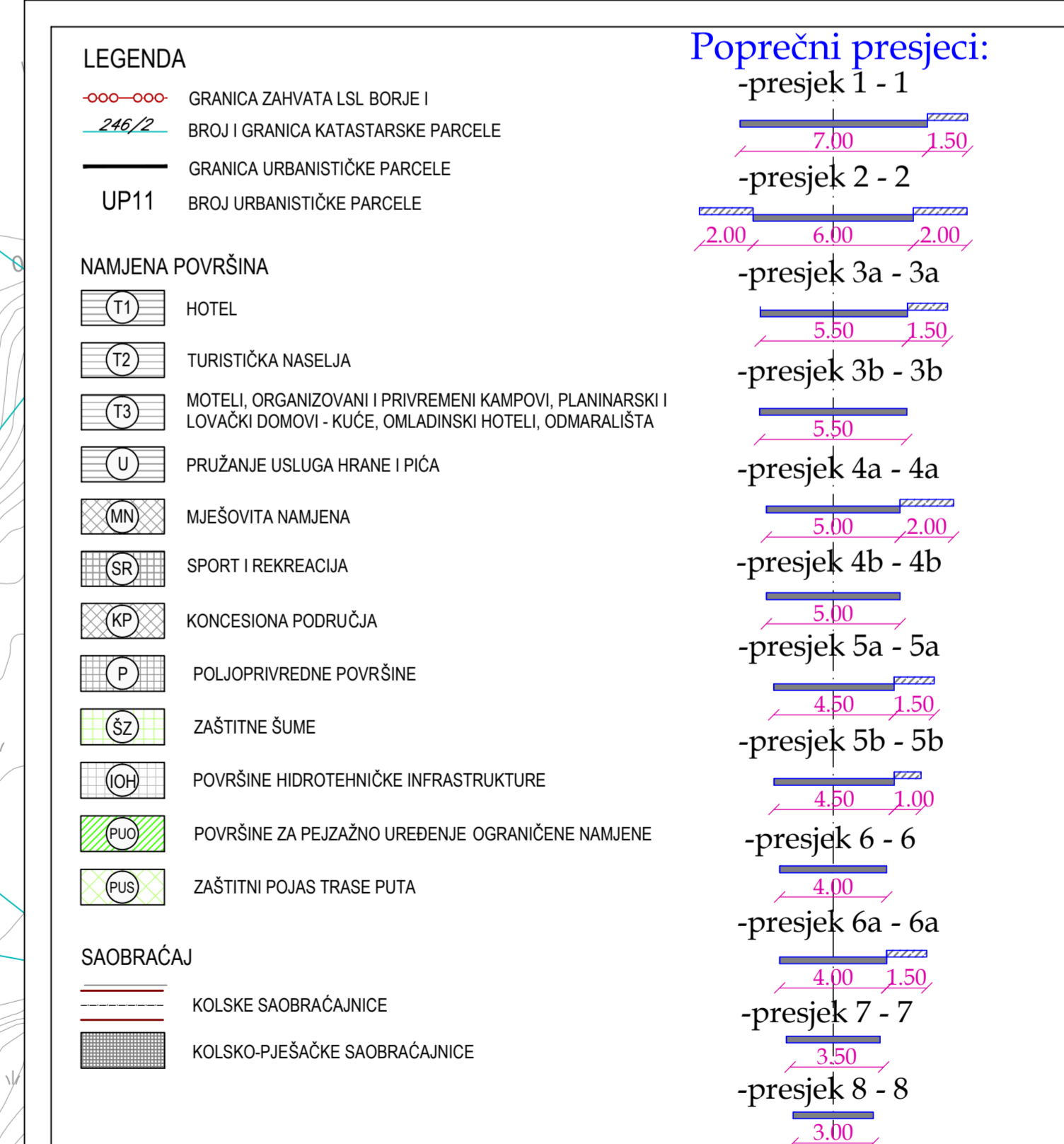
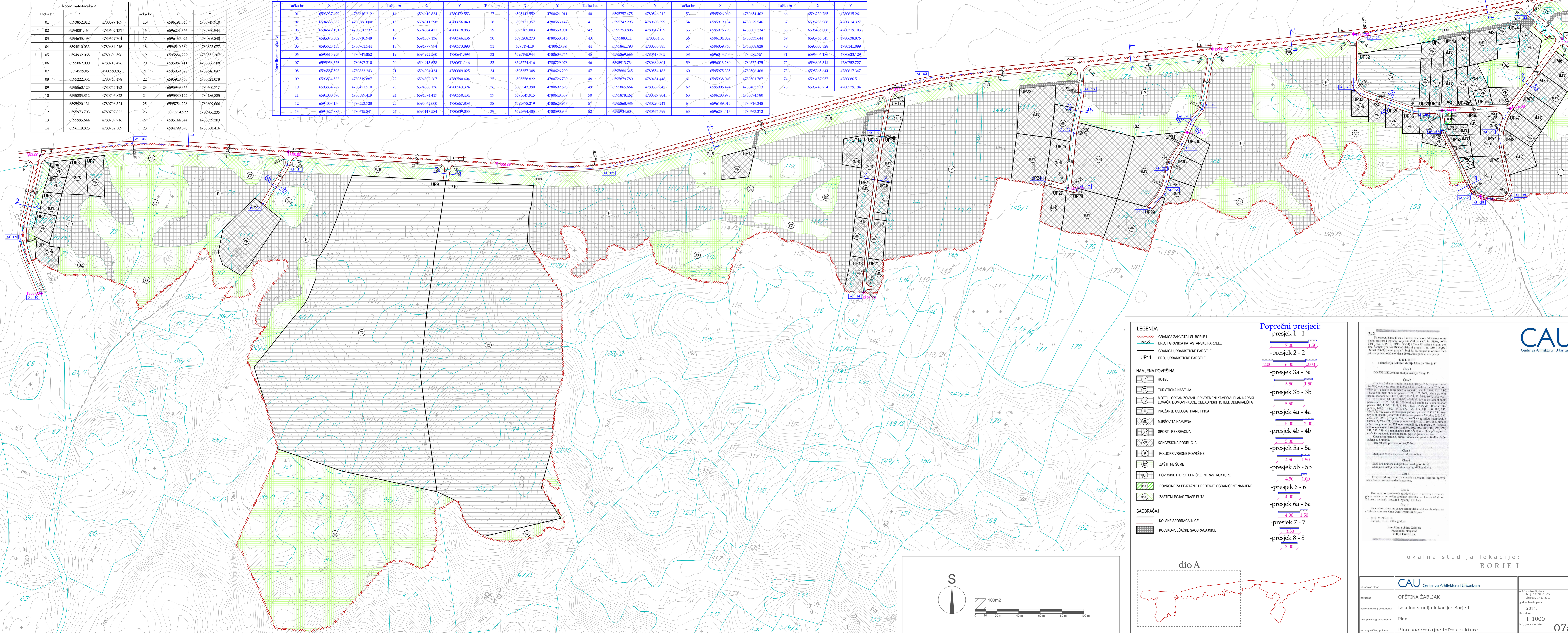


Koordinate tačka A					
Tačka br.	X	Y	Tačka br.	X	Y
01	6594852.812	4780599.167	15	6596191.343	4780747.910
02	6594801.464	4780602.131	16	6596251.866	4780760.944
03	6594635.498	4780597.074	17	6596465.024	4780806.848
04	6594810.033	4780884.216	18	6596540.389	4780825.077
05	6594932.068	4780696.596	19	6595884.232	4780552.207
06	6595062.000	4780710.426	20	6595967.411	4780668.508
07	6594229.05	4780595.85	21	6595959.520	4780646.847
08	6595222.334	4780740.478	22	6595948.760	4780821.078
09	6595360.125	4780745.193	23	6595939.366	4780800.717
10	6595888.812	4780707.823	24	6595880.122	4780486.885
11	6595920.131	4780700.324	25	6595754.228	4780609.006
12	6595973.703	4780707.822	26	6595254.522	4780706.235
13	6595995.644	4780709.716	27	6595144.544	4780639.203
14	6596119.823	4780732.509	28	6594799.596	4780568.416

Tačka br.	X	Y	Tačka br.	X	Y	Tačka br.	X	Y	Tačka br.	X	Y	Tačka br.	X	Y
01	6594937.479	4780610.212	14	6594610.834	4780472.553	27	6595145.552	4780621.011	40	6595757.475	4780546.212	53	6595926.069	4780654.402
02	6594368.857	4780896.000	15	6594811.598	4780656.040	28	6595171.357	4780563.142	41	6595742.295	4780608.399	54	6595919.134	4780629.546
03	6594072.191	4780670.232	16	6594804.421	4780618.983	29	6595185.003	4780559.001	42	6595753.806	4780617.159	55	6595916.795	4780607.234
04	6595073.532	4780710.948	17	6594807.136	4780566.436	30	6595208.273	4780558.316	43	6595883.11	4780534.56	56	6596104.052	4780633.644
05	6595328.483	4780761.544	18	6594777.974	4780573.898	31	6595194.19	4780623.89	44	6595861.798	4780583.885	57	6596059.763	4780608.828
06	6595615.953	4780741.252	19	6594922.560	4780641.398	32	6595195.944	4780603.746	45	6595869.666	4780618.305	58	6596043.703	4780585.751
07	6595956.376	4780697.310	20	6594913.638	4780631.146	33	6595224.416	4780729.076	46	6595913.734	4780669.804	59	6596013.280	4780572.475
08	6596587.593	4780833.243	21	6595004.434	4780609.025	34	6595337.308	4780626.399	47	6595884.345	4780554.183	60	6595975.335	4780566.468
09	6593843.533	4780519.887	22	6594892.267	4780590.404	35	6595538.822	4780726.739	48	6595879.780	4780481.448	61	6595938.048	4780501.787
10	6593854.262	4780471.510	23	6594888.136	4780563.324	36	6595543.390	4780692.698	49	6595865.664	4780359.647	62	6595906.424	4780483.513
11	6594086.690	4780989.419	24	6594874.417	4780550.434	37	6595647.915	4780648.37	50	6595878.671	4780327.804	63	6596188.978	4780694.780
12	6594058.130	4780553.728	25	6595062.000	4780657.858	38	6595678.219	4780623.947	51	6595868.386	4780290.241	64	6596189.015	4780716.348
13	6594627.883	4780615.841	26	6595117.584	4780609.055	39	6595694.485	4780590.903	52	6595934.604	4780674.399	65	6596254.413	4780663.212



242.

Na osnovu plana 47 m 3 u vezi sa članom 24 Zakona o uređenju prostora i izgradnji objekata... (text continues with legal and technical details)

**ODLUKA**

o donošenju Lokalne studije lokacije "Borje I"

Član 1.  
DONOSI SE Lokalna studija lokacije "Borje I".

Član 2.  
Granica Lokalne studije lokacije "Borje I" se određuje... (text continues with details of the study area)

Član 3.  
Studija se donosi za period od pet godina.

Član 4.  
Studija je važišta u dijelovima i razlozima... (text continues with validity and application details)

Član 5.  
O sprovođenju Studije izdaje se organ lokalne uprave... (text continues with implementation details)

Član 6.  
Komunalna uprava... (text continues with administrative details)

Član 7.  
Ova odluka stupa na snagu osmog dana od dana objave... (text continues with effective date)

Član 8.  
Najbliža općina: Žabljak  
Prekočinje: Vukle  
Vukle, 07.11.2012.



lokala studija lokacije:  
BORJE I

izradio/la: CAU Centar za Arhitekturu i Urbanizam	odluka o izradi plana: broj 01/13-03-03	datum izdavanja: 07.11.2012.
naslov: OPŠTINA ŽABLJAK	datum izdavanja: 2014.	razina: 1:1000
naslov: Lokalna studija lokacije: Borje I	datum izdavanja: 2014.	razina: 1:1000
naslov: Plan	datum izdavanja: 2014.	razina: 1:1000
naslov: Plan saobraćajne infrastrukture	datum izdavanja: 2014.	razina: 1:1000

